

CIBERES PULMONARY BIOBANK CONSORTIUM

The Pulmonary Biobank Consortium (CPBC) is a network of biorepositories to facilitate the Access to biospecimens and clinical data to national and international researchers, in order to promote translational biomedical research.

To ensure the material quality, there is a cooperative working group in each hospital composed of:

- **Pneumologists / Critical care doctors**
- **Thoracic surgeons**
- **Pathologists**
- **Local biobanks**



WHAT IS CIBERES?

CIBERES (www.ciberes.org) is a multidisciplinary and multi-institutional research network in respiratory diseases.

The mission of CIBERES is to promote and protect respiratory health by fostering excellence in research and facilitating its quick and safe translation to clinical practice.

CIBERES includes 33 groups for about 400 researchers working together on 3 Research Programmes focused on the study of:

- LUNG CANCER
- OBSTRUCTIVE SLEEP APNEA
- PULMONARY FIBROSIS
- ASTHMA
- ACUTE LUNG INJURY
- TUBERCULOSIS
- PNEUMONIA
- CHRONIC OBSTRUCTIVE PULMONARY DISEASE
- PULMONARY HYPERTENSION
- HOST-PATHOGEN INTERACTION

CIBERES. PULMONARY BIOBANK CONSORTIUM HOSPITAL UNIVERSITARIO SON ESPASES

Biobanco Pulmonar. Módulo I, planta -1,
Ctra. Valldemossa nº79
07010 Palma (Balearic Islands) SPAIN
Telf.: +34 871 205050 ext. 64511/64512
E-mail: biobanco@ciberes.org

www.biobancopulmonar.ciberes.org

ciber

Centro de Investigación Biomédica en Red (CIBER)
Instituto de Salud Carlos III
C/ Monforte de Lemos 3-5. Pabellón 11
28029 Madrid
www.ciberisciii.es



Unión Europea

Fondo Europeo
de Desarrollo Regional
"Una manera de hacer Europa"

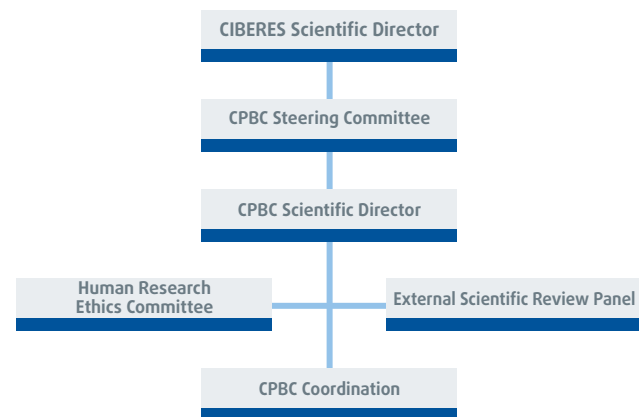


ciberes

Centro de Investigación Biomédica en Red
Enfermedades Respiratorias

Plataforma
**Biobanco
Pulmonar**

STRUCTURE OF CPBC



1. Fundació Jimémez Díaz
2. H. U. 12 de Octubre
3. H. U. de Getafe
4. H. U. Virgen del Rocío
5. H. G. U. València
6. H. U. de Tarragona Joan XXIII
7. H. U. de Bellvitge
8. H. Clínic de Barcelona
9. H. U. Germans Trias i Pujol
10. H. del Mar – IMIM
11. H. Vall d’Hebron
12. H. U. Son Espases



SERVICES

Supply of:
Tissue and blood samples.
Standardized clinical data.
Images in DICOM files.

Sample processing.
Sample storage.

Shipment management for national and international sample destinations.

Creation, monitoring and auditing of multicentre cohort samples.

Establishment of quality management system.

Ethical-legal and scientific-technical advice for the creation and use of sample collections.

Advice on management and creation of biobanks.

SPECIMENS AVAILABLE

TISSUE:

- Lung tissue preserved on RNA-Later
- Flash-frozen lung tissue
- Formalin-fixed paraffin-embedded lung tissue
- Paraformaldehyde-fixed OCT-embedded frozen lung tissue
- Flash-frozen lung tissue in OCT-embedded
- Fat tissue

FLUIDS:

- Whole blood
- Serum
- Plasma

CLINICAL DATA AVAILABLE

- Anthropometric data
- Smoking history
- Gas, vapor, dust, fum and / or asbestos exposure
- Lung function test
- Radiology diagnosis
- Toxic substances consumption
- Treatment prior to surgery (30 days)
- Clinical diagnosis
- Infections
- Cardiovascular risk factors
- Hematology
- CT images (DICOM format)